



# The KMAX range. Drive further all year round...

*Up to 35% improved mileage  
compared to its predecessor.<sup>1</sup>*



<sup>1</sup> Comparative tests made by Goodyear Innovation Centre Luxembourg on size 315/80R22.5 between July 2011 and June 2013 show that new Goodyear KMAX S and KMAX D steer and drive tyres offer an improvement in mileage potential\* of up to 30% and 35% respectively vs. Goodyear RHS II and RHD II + tyres.

**GOODYEAR**

MADE TO FEEL GOOD.



# ... without compromising on other attributes.

## → **Improved Mileage**

- Up to **35%** more mileage compared to its predecessors<sup>2</sup>

## → **All season capability**



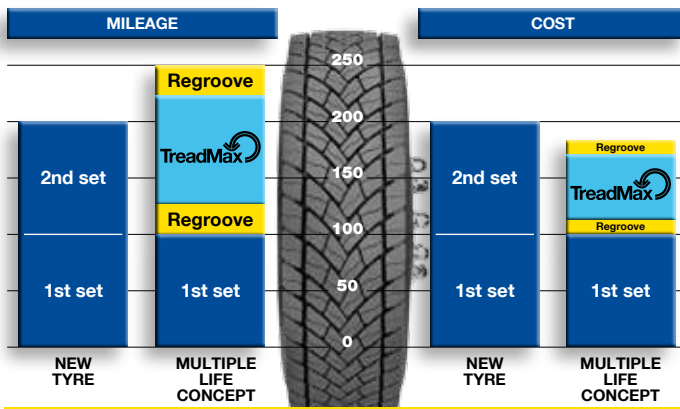
- KMAX range offers all season excellent performance confirmed by Three Peak Mountain Snow Flake and M+S marking on all KMAX S, D and T (17.5") and M+S marking on KMAX T 19,5" and 22.5"

## → **No compromise on other features**

- Thanks to innovative technologies no drawbacks on rolling resistance, wet braking and other important features.



Goodyear enables fleets to optimise the performance of their latest Goodyear truck tyres via the exclusive TreadMax MoldCure retreading process. By utilising only MaxTechnology casings, Goodyear TreadMax are produced using the same tread pattern and materials as used for new tyres. In doing so, Goodyear TreadMax offers a similar performance to new and enables fleets to maximise their investment in Goodyear's latest product developments.



**PrecurePro**

Goodyear Dunlop Precure Retreading Solutions

In addition, the latest KMAX tread patterns are being introduced to Goodyear PreCure customers at the same time as the TreadMax solution. The KMAX D and T pattern will be available in Goodyear's UniTac range through its high-class network of approved PreCurePro retreaders.



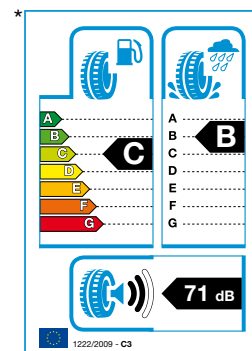
<sup>2</sup> Comparative tests made by Goodyear Innovation Centre Luxembourg on size 315/80R22.5 between July 2011 and June 2013 show that new Goodyear KMAX S and KMAX D steer and drive tyres offer an improvement in mileage potential of up to 30% and 35% respectively vs. Goodyear RHS II and RHD II + tyres.

# KMAX S

New generation steer tyre. Thanks to its computer modeled tread profile for optimised tyre pressure distribution, the KMAX S tyre offers regular wear, high mileage, robustness, good braking on wet and excellent handling which makes it the ideal choice for fleets.



[STEER]



\* These label grades are valid under Regulation (EC) N°1222/2009 for the KMAX S, size 315/80R22.5. For grades of other sizes, please refer to the table below since grades may vary according to the size.

## → Improved mileage

- Up to **30%** more mileage compared to its predecessor<sup>3</sup>

### Features

### Benefits

### Label

IntelliMax Rib Technology: Stiffer tread	High mileage and regular wear	
Wide tread, optimised footprint	High mileage	
Robust, wide shoulders	Improved robustness	
“Stiffener” technology in centre grooves	Good handling, steering response	
Specific blading frequency and geometry	Excellent braking on wet	✓
M+S and 3 Peak Mountain Snow Flake markings	Winter grip Meets legal winter requirements	

### Technical details table

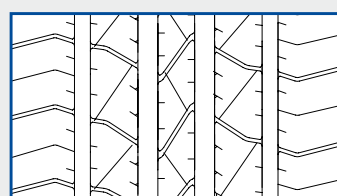
Size	Load Index	Speed Symbol	Poss. Rim widths	Comments	Fuel Efficiency	Wet Grip	Noise Emission (dB)
295/60R22.5	150/147 (149/146)	K (L)	8.25/9.00	TL	C	B	71
295/80R22.5	154/149	M	8.25/9.00	TL, HL	C	B	74
315/60R22.5	154/148	L	9.00/9.75	TL, HL	C	B	71
315/70R22.5	156/150	L	9.00/9.75	TL, HL	C	B	72
315/80R22.5	156/150 (154/150)	L (M)	9.00/9.75	TL	C	B	71
355/50R22.5	156	K	11.75	TL, HL	C	B	71
385/55R22.5	160 (158)	K (L)	11.75	TL	B	B	71
385/65R22.5	160 (158)	K (L)	11.75	TL	B	B	70

### Retreading and Regrooving

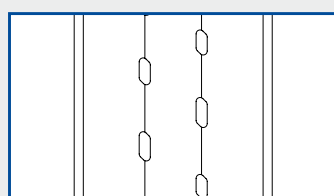
KMAX S tyres are regroovable and retreadable, allowing fleets to make the ideal use of the “Multiple Life Concept” (new - regroove - retread - regroove) for optimised cost/km.



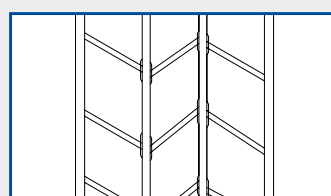
### Regrooving recommendations



New tyre tread



80% worn



Regrooved tyre



Max. regrooving depth 3 mm, regrooving width 6-8 mm. Retreadable by Goodyear TreadMax.

<sup>3</sup> 3 Comparative tests made by Goodyear Innovation Centre Luxembourg on size 315/80R22.5 between July 2011 and June 2013 show that new Goodyear KMAX S and KMAX D steer and drive tyres offer an improvement in mileage potential of up to 30% and 35% respectively vs. Goodyear RHS II and RHD II + tyres.



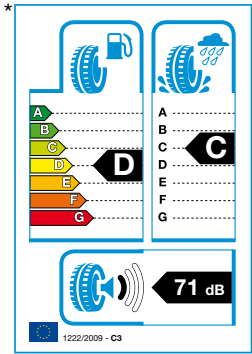
# KMAX D

[DRIVE]

The KMAX D tyre offers high mileage potential, high traction performance and low noise emission thanks to optimised tyre pressure distribution, the right number of pitches, the non-skid optimised block geometry and a higher wearable rubber volume compared to its predecessors. The KMAX D tyre meets established winter requirements and carries both the M+S and the 3 Peak Mountain Snow Flake symbol.

## → Improved mileage

- Up to **35%** more mileage compared to its predecessor<sup>4</sup>



\* These label grades are valid under Regulation (EC) N°1222/2009 for the KMAX D, size 315/80R22.5. For grades of other sizes, please refer to the table below since grades may vary according to the size.

Features	Benefits	Label
IntelliMax Tread Technology: Dual compound layer	High mileage and low rolling resistance	
Optimised block geometries	High mileage potential	
Directional, V-shape	Very low noise	✓
3D waffle sipes	Excellent traction	
M+S and 3 Peak Mountain Snow Flake Markings	Winter traction Meets legal winter requirements	

## Technical details table

Size	Load Index	Speed Symbol	Poss. Rim widths	Comments		Fuel Efficiency	Wet Grip	Noise Emission (dB)
295/60R22.5	150/147 (149/146)	K (L)	8.25/9.00	TL	TreadMax	C	B	72
295/80R22.5	152/148	M	8.25/9.00	TL	TreadMax	D	C	72
315/60R22.5	152/148	L	9.00/9.75	TL	TreadMax	D	B	73
315/70R22.5	154/150 (152/148)	L (M)	9.00/9.75	TL	TreadMax	D	C	72
315/80R22.5	156/150 (154/150)	L (M)	9.00/9.75	TL	TreadMax	D	C	71

## Retreading and Regrooving

KMAX D tyres are regroovable and retreadable, allowing fleets to make the ideal use of the “Multiple Life Concept” (new - regroove - retread - regroove) for optimised cost/km. KMAX D tyres are available as Treadmax mold cure retreads.



## Regrooving recommendations

New tyre tread

80% worn

Regrooved tyre

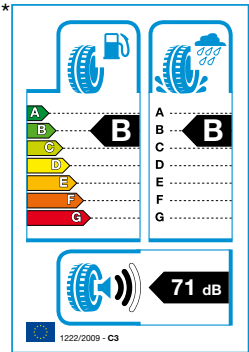
Max. regrooving depth 3 mm, regrooving width 6-8 mm. Retreadable by Goodyear TreadMax.

<sup>4</sup> Comparative tests made by Goodyear Innovation Centre Luxembourg on size 315/80R22.5 between July 2011 and June 2013 show that new Goodyear KMAX S and KMAX D steer and drive tyres offer an improvement in mileage potential of up to 30% and 35% respectively vs. Goodyear RHS II and RHD II + tyres.

KMAX T 19.5” and 22.5”

[TRAILER]

The KMAX T tyre offers superb mileage performance thanks to its multi radius cavity shape and its high wearable rubber volume associated to an innovative tread compound, which resists groove cracking and tread chunking.



\* These label grades are valid under Regulation (EC) N°1222/2009 for the KMAX T, size 385/55R22.5. For grades of other sizes, please refer to the table below since grades may vary according to the size.

Features	Benefits	Label
High wearable rubber volume	Excellent Mileage potential	
Reduced stone holding	Resistance to groove cracking	
Improved edge sipes	Excellent braking on wet	✓
Innovative tread compound	Fuel saving potential	✓

Technical details table

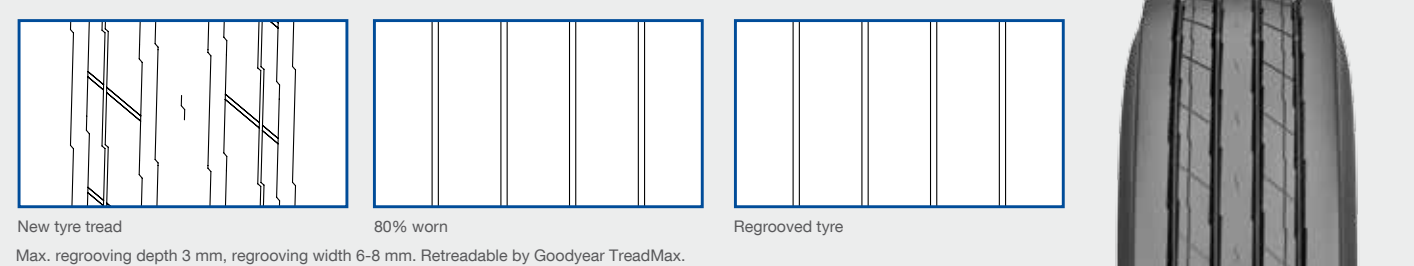
Size	Load Index	Speed Symbol	Poss. Rim widths	Comments		Fuel Efficiency	Wet Grip	Noise Emission (dB)
385/55R22.5	160 (158)	K (L)	11.75/12.25	TL	TreadMax	B	B	71
385/65R22.5	164 (158)	K (L)	11.75/12.25	TL, HL	TreadMax	B	C	71
425/65R22.5	165	K	12.25/14.00			B	B	72
435/50R19.5	160	J	14.00/15.00	RFID		B	C	73
445/65R22.5	169	K	13.00/15.00			B	B	72

Retreading and Regrooving

KMAX T tyres are regroovable and retreadable, allowing fleets to make the ideal use of the “Multiple Life Concept” (new - regroove - retread - regroove) for optimised cost/km. KMAX T (385/65R22.5, 385/55R22.5) are available as Treadmax mold cure retreads.



Regrooving recommendations



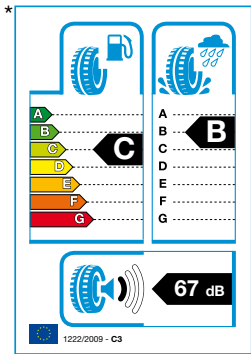
<sup>5</sup> 'FRT' stands for 'Free Rolling Tyre' and is a legal marking according to the UNECE Regulation No. 54, which indicates that the tyre is specifically designed and intended for the equipment of trailer axles and axles of motor vehicles other than front steering and all drive axles. Therefore these trailer tyres marked 'FRT' should be used exclusively on trailer axles and axles of motor vehicles other than front steering and all drive axles and should not be fitted in any other position. Goodyear Dunlop will not warrant and cannot be held accountable for any potential liability claim involving FRT tyres fitted outside these recommendations.

# KMAX T 17.5"

The KMAX T 17.5 range is the ideal choice for low platform application. Thanks to its tread design and robust construction these tyres offer all season mobility (confirmed by M+S and Three Peak Mountain Snow Flake) combined with optimal mileage and robustness even in demanding low platform usage.



[TRAILER]



\* These label grades are valid under Regulation (EC) N°1222/2009 for the KMAX T, size 215/75R17.5. For grades of other sizes, please refer to the table below since grades may vary according to the size.

Features	Benefits	Label
4 rib tread design	Even pressure distribution Robustness	
Radial and longitudinal sipes	Increased grip on wet and snow	✓
Special tread compound	High mileage potential	

## Technical details table

Size	Load Index	Speed Symbol	Poss. Rim widths	Comments	Fuel Efficiency	Wet Grip	Noise Emission (dB)
205/65R17.5	129/127 (132/132)	K (F)	6.00/6.75	TL	C	B	71
215/75R17.5	135/133	J	6.00/6.75	TL	C	B	67
235/75R17.5	143/141 (144/144)	J (F)	6.75/7.50	TL	C	B	69
245/70R17.5	143/141 (146/146)	J (F)	6.75/7.50	TL	B	B	70

## Regrooving recommendations

New tyre tread

80% worn

Regrooved tyre

Max. regrooving depth 2.5 mm, regrooving width 6 mm.

\* 'FRT' stands for 'Free Rolling Tyre' and is a legal marking according to the UNECE Regulation No. 54, which indicates that the tyre is specifically designed and intended for the equipment of trailer axles and axles of motor vehicles other than front steering and all drive axles. Therefore these trailer tyres marked 'FRT' should be used exclusively on trailer axles and axles of motor vehicles other than front steering and all drive axles and should not be fitted in any other position. Goodyear Dunlop will not warrant and cannot be held accountable for any potential liability claim involving FRT tyres fitted outside these recommendations.