



**TYRES WORTH OWNING**

# PRODUCT GUIDE



Effective as at March 2022



CAR



SUV



UTE



4WD



**STT PRO**

Serious Off-Road

Page: 4



**S/T MAXX**

Heavy Duty All-Terrain

Page: 6



**RUGGED TREK**

Rugged Terrain

Page: 8



**AT3 XLT**

Tough All-Terrain

Page: 10



**AT3 LT**

All-Terrain

Page: 12



**AT3 4S**

All-Weather

Page: 14



**LTZ PRO**

Sports All-Terrain

Page: 16





**ATT**

Lifestyle All-Terrain

Page: 18



**SRX**

Premium Touring

Page: 20



**CS5 GRAND**

Grand Touring

Page: 22



**CS5 ULTRA**

Ultra Touring

Page: 24



**CTT**

Touring

Page: 26



**C5**

Family Touring

Page: 28



**RS3-G1**

High Performance

Page: 30



# STT PRO

APPLICATION:  
**SERIOUS OFF-ROAD**

**20%** Road & Sand

**80%** Dirt & Mud

SUITABLE FOR:



UTE



4WD

The STT PRO is the most advanced extreme off-road tyre Cooper Tires® offers, providing remarkable off-road performance without sacrificing on-road traction. Tested in the tough Australian Outback.



## TREAD TECHNOLOGY

**Flex Grooves** allow the tyre to flex, dampening the impact generated by inconsistent terrain, giving you more flexibility, better off-road grip and a smoother ride.



## Mud Scoops and Mud Release Dimples

create air pockets to release mud and debris from the tread, giving you exceptional all-surface traction.



## Raised Rubber Ribs and Angled Groove Walls

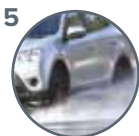
work together to eject stones from the tread, reducing stone retention and providing more grip off-road.



## CARCASS CONSTRUCTION

On top of high tensile body plies, the STT PRO features **Armor-Tek<sup>3</sup> Construction** - an additional third ply on an 8° angle. Unique Armor-Tek<sup>3</sup> Construction is engineered to give you over 2.5 times\* more tear and impact damage resistance by reducing the rubber gaps by 50% to give you peace of mind when driving off-road.

\*Compared to standard 2-ply tyres.



## COMPOUND FORMULA

**Advanced Silica Compound**, formulated with the optimum content of chemically-coupled silica. This helps reduce cutting and chipping off-road while improving wet traction on-road.



Rim	Tyre Size	Ply Rating	OD (mm)	Load Index	Tread Depth (mm)
15	30X9.5R15	6 PR	751	104Q	15.2
15	31X10.5R15	6 PR	781	109Q	15.8
15	32X11.5R15	6 PR	802	113Q	15.8
15	33X12.5R15	6 PR	831	108Q	16.6
15	35X12.5R15	6 PR	878	113Q	16.6
16	305/70R16	10 PR	838	124Q	15.4
16	225/75R16	10 PR	749	115Q	14.2
16	245/75R16	10 PR	780	120Q	14.3
16	265/75R16	10 PR	810	123Q	14.8
16	285/75R16	10 PR	838	126Q	15.1
16	315/75R16	10 PR	877	127Q	16.2
16	235/85R16	10 PR	810	120Q	14.3
17	37X12.5R17	8 PR	934	124Q	17.5
17	305/65R17	10 PR	830	121Q	16.6
17	265/70R17	10 PR	811	121Q	14.8
17	285/70R17	10 PR	839	121Q	15.2
17	315/70R17	10 PR	878	121Q	16.6
18	305/60R18	10 PR	830	121Q	16.6
18	275/65R18	10 PR	820	123Q	15.1
18	285/65R18	10 PR	836	125Q	15.1
18	275/70R18	10 PR	846	125P	16
18	305/70R18	10 PR	891	126Q	16.6
20	35X12.5R20	10 PR	881	121Q	16.6
20	305/55R20	10 PR	851	121Q	16.4
20	275/65R20	10 PR	876	126Q	15.2

# S/T MAXX

APPLICATION:  
**HEAVY DUTY ALL-TERRAIN**

**50%** Road & Sand

**50%** Dirt & Mud

SUITABLE FOR:



UTE



4WD

The S/T MAXX is one of our toughest, most damage resistant radial 4x4 tyres. A hybrid between an all-terrain and a mud-terrain with unique construction for maximum strength and damage resistance.

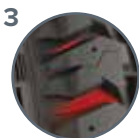


## TREAD TECHNOLOGY

**Micro-Gauge Sipes** reduce cutting and chipping whilst improving traction in the wet, giving you enhanced stability and longevity.



**Enhanced Buttress Design** provides additional off-road traction and a rugged appearance, giving you abrasion resistance and sidewall protection.

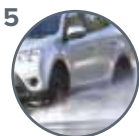


**Stone Ejector Ribs** and **Varied Channels** easily eject stones and gravel, protecting the carcass from stone drilling and maintaining a clear tread for enhanced rough road traction.



## CARCASS CONSTRUCTION

On top of high tensile body plies, the S/T MAXX features **Armor-Tek<sup>3</sup> Construction** - an additional third ply on an 8° angle. Unique Armor-Tek<sup>3</sup> Construction is engineered to give you over 2.5 times more tear and impact damage resistance by reducing the rubber gaps by 50% to give you peace of mind when driving off-road.  
\*Compared to standard 2-ply tyres.



## COMPOUND FORMULA

**Silica and Natural Rubber Compound** is uniquely formulated combining silica with natural rubber to reduce cut and chip off-road and improve wet traction on-road.



Rim	Tyre Size	Ply Rating	OD (mm)	Load Index	Tread Depth (mm)	Mileage Warranty (kms)*
15	30X9.5R15	6 PR	744	104Q	14.7	70,000
15	31X10.5R15	6 PR	781	109Q	14.7	80,000
16	245/70R16	10 PR	750	118Q	14.7	80,000
16	265/70R16	10 PR	784	121Q	14.7	80,000
16	225/75R16	10 PR	749	115Q	14.7	60,000
16	245/75R16	10 PR	779	120Q	14.7	60,000
16	265/75R16	10 PR	813	123Q	14.7	80,000
16	285/75R16	10 PR	836	126Q	14.7	80,000
16	315/75R16	10 PR	875	127Q	14.7	80,000
16	235/85R16	10 PR	812	120Q	14.7	60,000
17	265/65R17	10 PR	775	120Q	14.7	80,000
17	245/70R17	10 PR	780	119Q	14.7	80,000
17	265/70R17	10 PR	809	121Q	14.7	80,000
17	275/70R17	10 PR	817	121Q	14.7	80,000
17	285/70R17	10 PR	838	121Q	14.7	80,000
17	315/70R17	8 PR	878	121Q	14.7	80,000
17	245/75R17	10 PR	801	121Q	14.7	80,000
18	265/60R18	10 PR	781	119Q	14.7	80,000
18	265/65R18	10 PR	808	122Q	14.7	80,000
18	275/65R18	10 PR	818	123Q	14.7	70,000
18	285/65R18	10 PR	833	125Q	14.7	70,000
18	275/70R18	10 PR	848	125Q	14.7	70,000
18	295/70R18^	10 PR	870	129Q	14.7	70,000
20	285/55R20	10 PR	828	122Q	14.7	80,000
20	285/60R20	10 PR	851	125Q	14.7	60,000
20	275/65R20	10 PR	868	126Q	14.7	70,000

^Special order. \*Mileage Warranty terms and conditions apply.

# RUGGED TREK

APPLICATION:  
**RUGGED TERRAIN**

60% Road & Sand

40% Dirt & Mud

SUITABLE FOR:



SUV



UTE



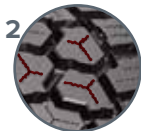
4WD

The RUGGED TREK is a stronger two ply tyre built to handle on and off-road. It has a unique rough terrain pattern to handle off-road tracks but also performs well on-road with low tyre noise and enhanced wet grip.



## TREAD TECHNOLOGY

The **Adaptive Sidewall**, provides a strong assertive look while delivering improved soft surface traction and increased sidewall protection with two distinctive designs: Knife Edge and Mountain Pass.



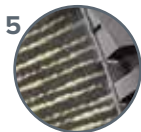
**Stable Trac Technology**, Omni-directional micro-gauge siping enhances traction on wet roads and rough surfaces, improving stability and control.



**Stone Blockades** are jutting ridges that dislodge debris and protect the tyre from damage when off-road.



**Earth Diggers** are large shoulder scoops and lugs that forcefully dig into dirt, sand and mud for enhanced traction.



## CARCASS CONSTRUCTION

Cooper's high strength, **High Tensile Body Ply** is 20% stronger than most other brands, giving you enhanced resistance to impact damage when driving off-road.



## COMPOUND FORMULA

**Advanced Silica Compound**, formulated with the optimum content of chemically-coupled silica. This provides excellent wet traction and highway handling while lowering rolling resistance, for more grip and better fuel efficiency.





### SUV CONSTRUCTION

Rim	Tyre Size	UTQG Wear/ Traction	OD (mm)	Load Index	Tread Depth (mm)	Mileage Warranty (kms)*
18	265/60R18 XL	600 A	781	114T	12.7	70,000
18	265/65R18 XL	600 A	801	116T	12.7	70,000
20	275/55R20 XL	600 A	817	117T	12.7	70,000
20	265/50R20 XL	600 A	773	111T	12.7	70,000
20	275/60R20	600 A	848	115T	12.7	70,000
22	285/45R22 XL	600 A	821	114T	12.7	70,000

### LIGHT TRUCK CONSTRUCTION

Rim	Tyre Size	Ply Rating	OD (mm)	Load Index	Tread Depth (mm)	Mileage Warranty (kms)*
17	265/70R17	10 PR	813	121Q	14.7	80,000
17	285/70R17	10 PR	839	121Q	14.7	80,000
18	275/65R18	10 PR	827	123Q	14.7	80,000
18	275/70R18	10 PR	855	125Q	14.7	80,000
20	35X12.5R20	12 PR	887	125Q	14.7	80,000
20	285/55R20	10 PR	832	122Q	14.7	80,000
20	305/55R20	12 PR	849	125Q	14.7	80,000
20	265/60R20	10 PR	836	121Q	14.8	80,000
20	275/65R20	10 PR	880	126Q	14.7	80,000

\*Mileage Warranty terms and conditions apply.

# AT3 XLT

APPLICATION:  
**TOUGH ALL-TERRAIN**

**70%** Road & Sand

**30%** Dirt & Mud

SUITABLE FOR:



SUV



UTE



4WD

The AT3 XLT delivers safety, reliability and durability for peace of mind. It also comes with an 80,000km\* warranty and real value for money.



## TREAD TECHNOLOGY

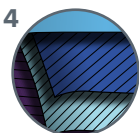
**Rugged Shoulder Protection** provides a strong assertive look while delivering improved soft surface traction and increased shoulder protection.



**Deep Treads** reduce tread damage from cut and chip while delivering premium traction and longer tread life.

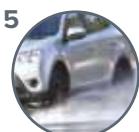


**Scalloped Shoulders** deliver increased soft surface off-road traction usually reserved for a more aggressive tread design. This feature allows additional traction without compromising on-road tyre performance and safety.



## CARCASS CONSTRUCTION

**Super High Tensile Light Truck Steel Belts** provide stronger and more durable layers under the full tread area to protect against road hazard damage and improves tyre balance.



## COMPOUND FORMULA

**Next-Gen Silica Compound** provides cut and chip resistance for improved tread life, mileage, grip and safety.



Rim	Tyre Size	Ply Rating	OD (mm)	Load Index	Tread Depth (mm)	Mileage Warranty (kms)*
15	31x10.5R15	6 PR	767	109R	13.1	80,000
16	305/70R16	10 PR	831	124R	13.5	80,000
16	285/75R16	10 PR	827	126R	13.5	80,000
16	315/75R16	10 PR	876	127R	13.5	80,000
17	285/70R17	10 PR	834	121S	13.5	80,000
17	315/70R17	10 PR	872	121S	13.5	80,000
18	285/65R18	10 PR	827	125S	12.7	80,000
18	305/65R18	10 PR	853	124S	13.1	80,000
18	265/70R18	10 PR	829	124S	13.1	80,000
18	275/70R18	10 PR	844	125S	12.7	80,000
18	295/70R18	10 PR	870	129S	13.5	80,000
20	35X12.5R20	10 PR	880	121R	13.1	80,000
20	275/55R20	10 PR	810	120S	12.6	80,000
20	285/55R20	10 PR	822	122R	12.6	80,000
20	305/55R20	10 PR	847	121S	12.6	80,000
20	265/60R20	10 PR	826	121R	12.6	80,000
20	275/60R20	10 PR	838	123S	12.6	80,000
20	285/60R20	10 PR	856	125S	12.7	80,000
20	275/65R20	10 PR	869	126S	12.7	80,000

\*Mileage Warranty terms and conditions apply.

# AT3 LT

APPLICATION:  
**ALL-TERRAIN**

**70%** Road & Sand

**30%** Dirt & Mud

SUITABLE FOR:



SUV



UTE



4WD

The AT3 LT is one of Cooper Tires® most popular tyres for drivers seeking reliable, quiet and safe all-terrain performance. With an 80,000km\* warranty for value.



## TREAD TECHNOLOGY

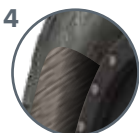
**Deep Treads** reduce tread damage from cut and chip while delivering premium traction and longer tread life.



**Scalloped Shoulders** deliver increased soft surface off-road traction usually reserved for a more aggressive tread design. This feature allows additional traction without compromising on-road tyre performance and safety.

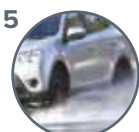


**Aqua Vac Channels** improve the tyre's resistance to hydroplaning by allowing water to evacuate quickly from the tread surface.



## CARCASS CONSTRUCTION

Cooper's high strength, **High Tensile Body Ply** is 20% stronger than most other brands, giving you enhanced resistance to impact damage when driving off-road.



## COMPOUND FORMULA

**Next-Gen Silica Compound** provides cut and chip resistance for improved tread life, mileage, grip and safety.



Rim	Tyre Size	Ply Rating	OD (mm)	Load Index	Tread Depth (mm)	Mileage Warranty (kms)*
16	245/70R16	10 PR	750	118R	13.1	80,000
16	265/70R16	10 PR	778	121R	13.1	80,000
16	225/75R16	10 PR	745	115R	13.1	80,000
16	245/75R16	10 PR	771	120R	13.1	80,000
16	265/75R16	10 PR	803	123R	13.1	80,000
16	235/85R16	10 PR	807	120R	13.1	80,000
17	265/65R17	10 PR	775	120R	12.7	80,000
17	275/65R17	10 PR	790	121S	12.7	80,000
17	285/65R17	10 PR	802	121S	12.7	80,000
17	245/70R17	10 PR	776	119S	13.1	80,000
17	265/70R17	10 PR	804	121S	13.1	80,000
17	275/70R17	10 PR	817	121R	13.1	80,000
17	225/75R17	10 PR	771	116R	13.1	80,000
18	265/60R18	10 PR	775	119S	12.7	80,000
18	265/65R18	10 PR	801	122R	12.7	80,000
18	275/65R18	10 PR	815	123S	12.7	80,000

\*Mileage Warranty terms and conditions apply.

# AT3 4S

APPLICATION:  
**ALL-WEATHER**

**80%** Road & Sand

**20%** Dirt & Mud

SUITABLE FOR:



SUV



UTE



4WD

The AT3 4S is one of our most popular SUV tyres for drivers seeking reliable and safe all-terrain performance. Great for weekend getaways and guaranteed to last up to 70,000kms\* for real value for money.



## TREAD TECHNOLOGY

**Scalloped Shoulders** deliver increased soft surface off-road traction usually reserved for more aggressive tread designs.



**Full-Depth Micro-Gauge Sipes** are deeper sipes that evacuate water from under the tyre to increase grip, handling and safety for the entire life of the tyre.

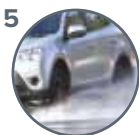


**Whisper Groove Shields** provide a sound barrier that minimises tyre noise for a quieter ride by reducing the noise within the tyre cavity.



## CARCASS CONSTRUCTION

**R-Tech Engineering** combines an extended stiff bead filler in the sidewall with a Variable Density Nylon Overlay over the belts to deliver crisp handling while maintaining passenger comfort. R-Tech gives you a safer, softer and smoother ride.



## COMPOUND FORMULA

**Next-Gen Silica Compound with Adaptive Technology** provides extreme weather traction while delivering lower rolling resistance and improved mileage.



Rim	Tyre Size	UTQG Wear/ Traction	OD (mm)	Load Index	Tread Depth (mm)	Mileage Warranty (kms)*
15	225/70R15	620 A	703	100T	10.7	70,000
15	255/70R15	620 A	739	108T	11.1	70,000
15	265/70R15	620 A	753	112T	11.1	70,000
15	235/75R15	620 A	730	109T	11.1	70,000
16	215/70R16	620 A	704	100T	10.7	70,000
16	225/70R16	620 A	728	103T	10.7	70,000
16	235/70R16	620 A	732	106T	10.7	70,000
16	255/70R16	620 A	763	111T	11.1	70,000
17	235/65R17 XL	620 A	742	108H	10.3	70,000
17	245/65R17 XL	620 A	750	111T	10.3	70,000
17	255/65R17	620 A	766	110T	10.3	70,000
20	265/50R20 XL	620 A	775	111T	9.5	70,000
20	275/55R20 XL	620 A	811	117T	9.9	70,000
20	275/60R20^	620 A	839	115T	9.9	70,000

XL = Extra Load ^ Special order. \*Mileage Warranty terms and conditions apply.



# LTZ PRO

APPLICATION:  
**SPORTS ALL-TERRAIN**

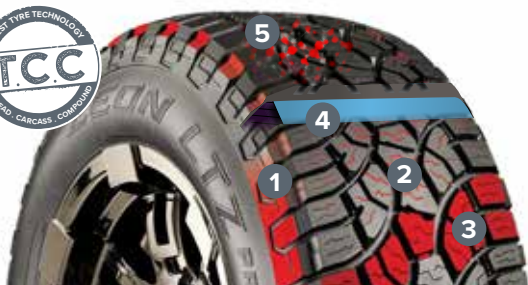
**70%** Road & Sand

**30%** Dirt & Mud

SUITABLE FOR:



The LTZ PRO is a hybrid between an original highway design and an all-terrain tyre. Higher tensile quality materials give more strength, increasing its load-carrying capacity.



## TREAD TECHNOLOGY

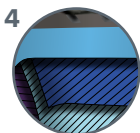
**Enhanced Buttress Design** for the perfect balance between style, rugged off-road looks and performance, giving you enhanced traction and abrasion resistance.



**Dual 'Z' Shaped Sipes** balance tread element stiffness, giving you excellent tread wear and handling for long, dependable traction in all weather conditions.

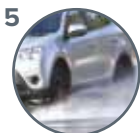


**Five Rib Design** balances on-road control, handling and off-road traction performance, giving you an on-road feel with off-road capability.



## CARCASS CONSTRUCTION

The **Sports Truck Construction** has stronger steel belts that increase the load carrying capacity and provide better resistance to damage when off-road.



## COMPOUND FORMULA

**Advanced Silica Compound** formulated with the optimum content of chemically-coupled silica. This provides excellent wet traction and highway handling while lowering rolling resistance, which gives you more grip and better fuel efficiency.





Rim	Tyre Size	UTQG Wear/ Traction	OD (mm)	Load Index	Tread Depth (mm)	Mileage Warranty (kms)*
18	285/60R18 XL	520 A	795	116S	11.1	50,000
20	285/50R20 XL	520 A	800	120S	11.1	50,000

\*Mileage Warranty terms and conditions apply.



# ATT

APPLICATION:  
**LIFESTYLE ALL-TERRAIN**

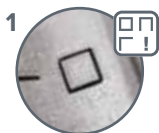
**80%** Road & Sand

**20%** Dirt & Mud

SUITABLE FOR:



The ATT is designed with SUV drivers in mind and the lifestyle you lead. It delivers safety, reliability, durability, comfort and value for money.



## TREAD TECHNOLOGY

**Wear Square Visual Indicators** change as your tyres wear, making it easy to determine the tread life remaining, giving you confidence and safety you can see.



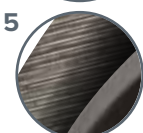
**Whisper Groove Shields** provide a sound barrier that minimises tyre noise for a quieter ride by reducing the noise created within the tyre cavity.



**Stone Ejector Ledges** and **Engineered Groove Shapes** easily eject stones and gravel, protecting the carcass from stone drilling and maintaining a clear tread for enhanced rough road traction.

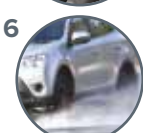


**Aqua Vac Channels** improve the tyre's resistance to hydroplaning by allowing water to evacuate quickly from the tread surface.



## CARCASS CONSTRUCTION

**High Tensile Body Ply** enhances damage resistance and increases load carrying capacity. 49% stronger than standard SUV tyres.



## COMPOUND FORMULA

**Advanced Silica Compound**, formulated with the optimum content of chemically-coupled silica. This provides excellent wet traction and highway handling while lowering rolling resistance, for more grip and better fuel efficiency.



Rim	Tyre Size	UTQG Wear/ Traction	OD (mm)	Load Index	Tread Depth (mm)	Mileage Warranty (kms)*
16	235/60R16 XL	620 A	688	104H	9.2	60,000
16	215/65R16 XL	620 A	686	102H	9.2	60,000
16	245/70R16 XL	620 A	750	111H	9.2	60,000
16	265/70R16 XL	620 A	778	116T	9.2	60,000
17	215/55R17 XL	620 A	668	98H	9.2	60,000
17	225/55R17 XL	620 A	680	101H	9.2	60,000
17	215/60R17 XL	620 A	690	100H	9.2	60,000
17	225/60R17 XL	620 A	702	103H	9.2	60,000
17	235/60R17 XL	620 A	714	106H	9.2	60,000
17	225/65R17 XL	620 A	747	106H	9.2	60,000
17	265/65R17 XL	620 A	776	116H	9.2	60,000
18	225/55R18 XL	620 A	705	102H	9.2	60,000
18	235/55R18 XL	620 A	715	104H	9.2	60,000
18	255/55R18 XL	620 A	737	109H	9.2	60,000
18	245/60R18 XL	620 A	751	109H	9.2	60,000
18	265/60R18 XL	620 A	775	114H	9.2	60,000
18	285/60R18 XL	620 A	799	120T	9.2	60,000
19	255/55R19 XL	620 A	763	111H	9.2	60,000

XL = Extra Load \*Mileage Warranty terms and conditions apply.

# SRX

APPLICATION:  
**PREMIUM TOURING**

**90%** Road & Sand

**10%** Dirt & Mud

SUITABLE FOR:

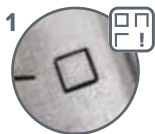


SUV



4WD

With advanced technology and engineering, the SRX delivers long-life tread, maximum ride comfort and improved fuel efficiency, for a wide range of vehicles.

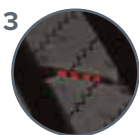


## TREAD TECHNOLOGY

**Wear Square Visual Indicators** change as your tyres wear, making it easy to determine the tread life remaining, giving you confidence and safety you can see.



**3D Micro-Gauge Sipes** allow the tread blocks to interlock for maximum stability, increased traction, handling and safety.

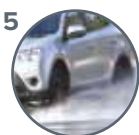


**Stabiledge Technology**, Cooper's unique rubber bumpers, are added to the gaps between tread blocks to keep them open and stable for maximum high ride stability, traction and precise handling.



## CARCASS CONSTRUCTION

**R-Tech Engineering**, for high ride comfort, combines an extended and stiff bead filler in the lower sidewall with a Variable Density Nylon Overlay over the belts. This delivers crisp handling while maintaining passenger comfort. R-Tech gives you a safer, softer and smoother ride.



## COMPOUND FORMULA

**Advanced Silica Compound**, formulated with the optimum content of chemically-coupled silica. This provides excellent wet traction and highway handling while lowering rolling resistance, for more grip and better fuel efficiency.



Rim	Tyre Size	UTQG Wear/ Traction	OD (mm)	Load Index	Tread Depth (mm)	Mileage Warranty (kms)*
16	255/65R16	740 A	741	109T	9.2	80,000
16	215/70R16	740 A	708	100H	9.6	80,000
16	235/70R16	740 A	736	106T	9.6	80,000
16	265/70R16	740 A	779	112T	9.6	80,000
17	245/65R17	740 A	750	107T	8.9	80,000
17	255/65R17	740 A	766	110T	9.2	80,000
17	265/65R17	740 A	775	112T	8.9	80,000
17	235/70R17 XL	740 A	760	109T	9.9	80,000
17	265/70R17	740 A	804	115T	9.9	80,000
18	255/55R18 XL	700 A	738	109V	8.9	80,000
18	235/60R18 XL	700 A	739	107V	8.9	80,000
18	245/60R18	740 A	753	105H	8.9	80,000
18	265/60R18	740 A	775	110T	8.9	80,000
18	265/65R18	740 A	801	114T	9.2	80,000
18	255/70R18	740 A	814	113T	9.6	80,000
18	265/70R18	740 A	828	116T	9.9	80,000
19	225/55R19	740 A	731	99H	9.2	80,000
19	245/55R19 XL	740 A	756	103T	9.2	80,000
20	275/45R20 XL	700 A	756	110V	12.0	80,000
20	245/50R20	700 A	753	102V	8.9	80,000
20	255/50R20 XL	740 A	764	109H	9.6	80,000
20	265/50R20 XL	740 A	778	111T	9.2	80,000
20	235/55R20	740 A	766	102H	7.5	80,000
20	255/55R20 XL	740 A	793	110H	9.6	80,000
20	275/55R20 XL	740 A	810	117H	8.9	80,000
20	275/60R20^	740 A	843	115T	9.2	80,000
22	285/45R22 XL	740 A	814	114H	8.9	80,000

XL = Extra Load ^ Special order. \*Mileage Warranty terms and conditions apply.

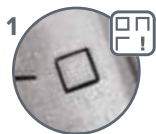
# CS5 GRAND

APPLICATION:  
**GRAND TOURING**

SUITABLE FOR:



The CS5 GRAND features leading-edge advancements in tyre technology to deliver an even wearing, long-lasting, quiet tyre, designed to fit most popular SUVs and cars.



## TREAD TECHNOLOGY

**Wear Square Indicators** change as your tyres wear, making it easy to determine the tread life remaining. This gives you convenience, confidence and safety you can see.



**3D Micro-Gauge Sipes** allow the tread blocks to interlock for maximum stability, increased traction, handling and safety.

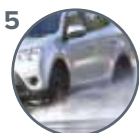


The **Asymmetric Tread Design** is built for easy rotation in all four corners of the vehicle, giving you a long-lasting, even wearing tyre and a quiet ride.



## CARCASS CONSTRUCTION

**R-Tech Engineering**, for high ride comfort, combines an extended and stiff bead filler in the lower sidewall with a Variable Density Nylon Overlay over the belts. This delivers crisp handling while maintaining passenger comfort. R-Tech gives you a safer, softer and smoother ride.



## COMPOUND FORMULA

**Next-Gen Silica Compound**, with **Adaptive Technology**, provides extreme weather traction while delivering lower rolling resistance and improved mileage. The silica content is optimised to deliver more grip, improved safety and extended tread life.



Rim	Tyre Size	UTQG Wear/ Traction	OD (mm)	Load Index	Tread Depth (mm)	Mileage Warranty (kms)*
15	205/70R15	780 A	669	96T	9.3	80,000
15	215/70R15	780 A	683	98T	9.3	80,000
16	205/55R16	780 A	632	91T	8.8	80,000
16	205/60R16	780 A	652	92T	8.8	80,000
16	215/60R16	780 A	664	95T	8.8	80,000
16	225/60R16	780 A	676	98T	8.8	80,000
16	235/60R16	780 A	688	100T	8.8	80,000
16	215/65R16	780 A	686	98T	9.2	80,000
16	225/65R16	780 A	698	100T	9.2	80,000
16	205/70R16	780 A	693	97T	9.1	80,000
16	225/70R16	780 A	722	103T	9.3	80,000
17	225/55R17	780 A	680	97T	8.8	80,000
17	235/55R17	780 A	690	99T	8.8	80,000
17	215/60R17	780 A	690	96T	8.8	80,000
17	225/60R17	780 A	702	99T	8.8	80,000
17	235/60R17	780 A	714	102T	8.8	80,000
17	225/65R17	780 A	724	102T	9.2	80,000
17	235/65R17	780 A	738	104T	9.2	80,000
18	225/50R18	780 A	683	95T	8.8	80,000
18	225/55R18	780 A	705	98T	8.8	80,000
18	235/65R18	780 A	763	106T	9.2	80,000

\*Mileage Warranty terms and conditions apply.

# CS5 ULTRA

APPLICATION:  
**ULTRA TOURING**

SUITABLE FOR:

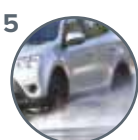
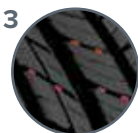
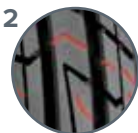
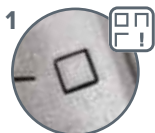


CAR



SUV

The CS5 ULTRA is Cooper Tires® ultra-sleek, modern, everyday tyre, with visual indicators to keep track of wear - for added confidence you can see.



## TREAD TECHNOLOGY

**Wear Square Indicators** change as your tyres wear, making it easy to determine the tread life remaining, giving you confidence and safety you can see.

**3D Micro-Gauge Sipes** allow the tread blocks to interlock for maximum stability, increased traction, handling and safety.

**Stabledge Technology**, Cooper's unique rubber bumpers are added to the gaps between tread blocks to keep them open and stable for maximum high ride stability, traction and precise handling.

## CARCASS CONSTRUCTION

**R-Tech Engineering**, for high ride comfort, combines an extended and stiff bead filler in the lower sidewall with a Variable Density Nylon Overlay over the belts. This delivers crisp handling while maintaining passenger comfort. R-Tech gives you a safer, softer and smoother ride.

## COMPOUND FORMULA

**Next-Gen Silica Compound**, with **Adaptive Technology**, provides extreme weather traction while delivering lower rolling resistance and improved mileage. The silica content is optimised to deliver more grip, improved safety and extended tread life.





Rim	Tyre Size	UTQG Wear/ Traction	OD (mm)	Load Index	Tread Depth (mm)	Mileage Warranty (kms)*
15	195/55R15	640 A	595	85V	8.6	80,000
16	225/50R16	640 A	632	92V	8.6	80,000
16	195/55R16	640 A	620	87V	8.6	80,000
16	215/55R16	640 A	642	93H	8.6	80,000
16	225/55R16	640 A	655	95H	8.6	80,000
17	225/45R17 XL	500 A	634	94W	8.6	80,000
17	245/45R17	640 A	652	95H	8.6	80,000
17	205/50R17 XL	640 A	638	93V	8.6	80,000
17	215/50R17 XL	640 A	648	95V	8.6	80,000
17	225/50R17	640 A	658	94V	8.6	80,000
17	235/50R17	640 A	668	96V	8.6	80,000
17	215/55R17	640 A	668	94V	8.6	80,000
18	225/45R18 XL	500 A	659	95W	8.6	80,000
18	235/45R18	640 A	677	94V	8.6	80,000
18	245/45R18 XL	640 A	677	100V	8.6	80,000
18	215/55R18	640 A	693	95H	8.6	80,000
18	235/55R18 XL	640 A	715	104V	8.6	80,000
18	225/60R18	640 A	727	100V	8.6	80,000
18	235/60R18	640 A	739	103V	8.6	80,000
18	245/60R18	640 A	756	105H	8.6	80,000
19	245/40R19 XL	500 A	679	98W	8.6	80,000
19	225/45R19 XL	500 A	685	96W	8.6	80,000
19	255/45R19 XL	640 A	713	104V	8.6	80,000
19	235/55R19 XL	640 A	741	105H	8.6	80,000
20	255/35R20 XL	500 A	686	97W	8.6	80,000
20	255/45R20	640 A	738	101V	8.6	80,000

XL = Extra Load \*Mileage Warranty terms and conditions apply.

# CTT

APPLICATION:  
**TOURING**

SUITABLE FOR:



The CTT is a high-performance tyre designed specifically for today's rapidly expanding SUV market.



## TREAD TECHNOLOGY

**U-Shaped Fluid Optimised Grooves** are a unique design that allows water to evacuate from the tread surface, preventing hydroplaning, giving you more control on wet roads.



## Four Layered Noise Isolation Bars

effectively disperse tyre noise, providing a quieter driving experience.



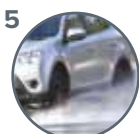
## Chamfered Shoulder Design

improves tread rigidity, handling and braking distance, providing safety and giving you a better feel for the road.



## CARCASS CONSTRUCTION

**Sound Proof Layer** absorbs road noise for a comfortable quiet ride.



## COMPOUND FORMULA

**Anti-Skid Coupled-Silica Compound**, with four times the silica mixed with anti-skid resin, is designed for excellent wet traction, longer treadwear and reduced rolling resistance.



Rim	Tyre Size	UTQG Wear/ Traction	OD (mm)	Load Index	Tread Depth (mm)	Mileage Warranty (kms)*
16	215/65R16	500 A	686	98H	7.9	50,000
17	215/60R17	500 A	690	96H	7.9	50,000
17	225/60R17	440 A	702	99H	7.9	50,000
18	215/55R18	500 A	693	95V	7.9	50,000
18	225/55R18	440 A	705	98V	7.9	50,000
18	225/55R18	500 A	705	98H	7.9	50,000
18	235/55R18	440 A	715	100V	7.9	50,000
18	225/60R18	440 A	727	100H	7.9	50,000
18	235/60R18	440 A	739	103V	7.9	50,000
19	225/45R19	440 A	685	96V	7.9	50,000
19	235/50R19	440 A	719	99V	7.9	50,000
19	225/55R19	440 A	731	99H	7.9	50,000
19	235/55R19	440 A	741	101H	7.9	50,000
19	245/55R19	500 A	753	103V	7.9	50,000
20	255/45R20	500 A	738	101V	7.9	50,000
20	235/55R20	500 A	766	102V	7.9	50,000

\*Mileage Warranty terms and conditions apply.

# C5

APPLICATION:  
**FAMILY TOURING**

SUITABLE FOR:



The C5 is a performance family car tyre for everyday driving, providing a quieter ride along with safe and comfortable performance.



## TREAD TECHNOLOGY

**Intermediate Ribs** ensure grip and performance are at a maximum for the life of the tyre.



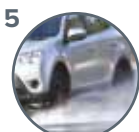
**High Density Sipes** create a more flexible tread to deliver better road traction and safety, especially in the wet.



**Solid Shoulder Noise-Sealing Ribs** reduce vibrations and absorb noise to give a more comfortable ride.



**Four Wide Circumferential Grooves** effectively channel water out of the tyre to prevent hydroplaning, giving you more control on wet roads.



## COMPOUND FORMULA

**Anti-Skid Coupled-Silica Compound**, with four times the silica mixed with anti-skid resin, is designed for excellent wet traction, longer treadwear and reduced rolling resistance.



Rim	Tyre Size	UTQG Wear/ Traction	OD (mm)	Load Index	Tread Depth (mm)	Mileage Warranty (kms)*
15	185/60R15	540 A	603	84V	7.8	50,000
15	195/60R15	540 A	615	88V	7.8	50,000
15	185/65R15	540 A	621	88V	7.8	50,000
15	195/65R15	540 A	635	91V	7.8	50,000
15	205/65R15	540 A	647	94V	7.8	50,000
16	205/55R16	540 A	632	91V	7.8	50,000
16	205/60R16	540 A	652	92V	7.8	50,000
16	215/60R16	540 A	664	95V	7.8	50,000
17	225/50R17	540 A	658	94V	7.8	50,000
17	215/55R17	540 A	668	94V	7.8	50,000
17	225/55R17	540 A	680	97V	7.8	50,000
17	225/65R17	540 A	724	102V	7.8	50,000

\*Mileage Warranty terms and conditions apply.

# RS3-G1

APPLICATION:  
**HIGH PERFORMANCE**

SUITABLE FOR:



The high performance RS3-G1 is designed specifically for performance vehicles to provide crisp handling at higher speeds and improved tread life.



## TREAD TECHNOLOGY

**3D Micro-Gauge Sipes** allow the tread blocks to interlock for maximum stability, increased traction, handling and safety.



The **Asymmetric Tread Design** is built for easy rotation in all four corners of the vehicle, giving you a long-lasting, even wearing tyre and a quiet ride.



**Wear Square Indicators** change as your tyres wear, making it easy to determine the tread life remaining, giving you confidence and safety you can see.



## CARCASS CONSTRUCTION

**Durable Uniform Construction**, a combination of high density belt wire, high modulus polyester plies and high module bead filler, is designed to give you a crisp and tight steering response.



## COMPOUND FORMULA

**Advanced Silica Compound**, formulated with the optimum content of chemically-coupled silica. This provides excellent wet traction and highway handling while lowering rolling resistance, for more grip and better fuel efficiency.



Rim	Tyre Size	UTQG Wear/ Traction	OD (mm)	Load Index	Tread Depth (mm)
17	215/45R17 XL	500 AA	627	91W	8.3
17	225/45R17 XL	500 AA	635	94W	8.3
17	235/45R17	500 AA	645	94W	8.3
18	225/40R18 XL	500 AA	638	92W	8.3
18	245/40R18 XL	500 AA	654	97W	8.3
18	235/50R18	500 AA	693	97W	8.3

XL = Extra Load



# NOT ALL TYRES ARE THE SAME, COMPARE THE VALUE

Mileage Warranty

**UP TO 80,000KM**

We are so confident in our tyres, that we offer a mileage warranty of up to 80,000km depending on the tyre size and pattern that you purchase\*.



Manufacturer's

**WARRANTY**

All Cooper® tyres are guaranteed against manufacturing faults for a period of 6 years, from the date of purchase, or for the tread life<sup>^</sup> of the tyre – whichever is earlier.

The Cooper Tires® car range (CS5GRAND, CS5ULTRA, CTT, C5 and RS3-G1) also offers an Australia-wide Free Lifetime Replacement Warranty against manufacturing faults for the life of the tyre. This means if you experience any manufacturing fault during the tread life of the tyre, it will be replaced, hassle free<sup>^</sup>.

Online

**REGISTRATION**

Go to [www.coopertires.com.au/the-cooper-difference/online-registration](http://www.coopertires.com.au/the-cooper-difference/online-registration), and register your purchase. We will store your purchase details, so you don't have to. Another reason why Cooper Tires® are tyres worth owning.

\*Terms and conditions apply. Mileage Warranty may vary depending on tread pattern and size. <sup>^</sup>For warranty details, visit <https://coopertires/warranty>.





Cooper Tires®

## TYRE TECHNOLOGY

The latest technology makes a massive difference to strength, stability, performance and value for money. There are three areas to check - just remember T.C.C: **Tread Design, Carcass Construction** and **Compound**.



### Tread Design

Like shoes, your tyres must suit the places you want to go. You wouldn't wear hiking boots to work or business shoes to the beach.



### Carcass Construction

A tyre's carcass is like a house's foundation. You need a strong foundation for the construction that goes on top.



It's the same with tyres. You might be surprised to learn that while tread is critical, it's the carcass that accounts for up to 70% of a tyre's performance.

### Compound

We all know the quality of plastics differs greatly - some are brittle while others are strong and flexible. It's the same with the quality of the compound in tyres. Coupled silica is the latest generation in compounds.



# NOT ALL TYRES ARE THE SAME, **COMPARE THE VALUE**

Cooper Tires® offer

## **MORE VALUE**

Cooper Tires® are well known for 4WD tyres, with stronger sidewalls, deeper treads, advanced silica compounds and the tyre technology required for off-road journeys. However, the new age of SUV driver has emerged, and the Cooper Tire® range has expanded to capture this growing market, providing safer, high ride tyre options. So, when buying tyres, don't choose the cheapest, take a closer look and you will see Cooper® tyres are not only safer to protect your family, but they can save you money in the long run.

Keep reading to learn more about what makes Cooper Tires® worth owning or visit [coopertires.com.au](http://coopertires.com.au).

Cooper Tires® are

## **TESTED AND PROVEN**

Cooper Tires® uses Australia's harsh terrain as a testing ground for its current range of tyres and new prototypes. Tyres are rigorously tested to research and analyse specific attributes such as grip, strength and mileage. These tests are done to ensure the tyres can withstand the most extreme conditions you can find in Australia.





## The importance of **DEEPER TREADS**

There are two main reasons why deeper treads are important: more mileage and shorter braking distances.

### **Go further on Cooper® tyres**

With a tread depth indicator, measure the tread depth between the tread blocks in the centre of the tyre.

Use the recorded depth measurements throughout this brochure to compare Cooper Tires® against other leading brands.

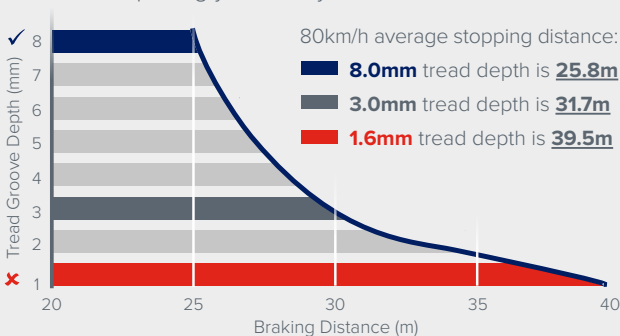


### **Deeper treads can save lives with shorter braking distances**

The chart below is based on tyres tested at tread depths of 8mm down to the 1.6mm legal limit.

#### **Tread Depth VS Braking Distance**

This demonstrates how reduced tread depths dramatically increase the wet braking distance, especially tread depths below 3mm, putting your safety at risk.



Data source: Courtesy of the British Rubber Manufacturers' Association (UK). Tests carried out by independent experts, the Motor Industry Research Association (UK).

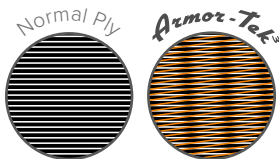
# NOT ALL TYRES ARE THE SAME, COMPARE THE VALUE

See the value in

## 4WD CONSTRUCTION AND ENGINEERING



**Armor-Tek<sup>3</sup>  
Construction**

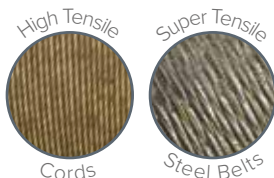


Armor-Tek<sup>3</sup> gives you over 2.5 times more tear and impact damage resistance by reducing the rubber gaps by 50%\* for peace of mind off-road. It features an additional third ply at an 8° angle which maximises carcass protection and lowers sidewall damage, giving you more stability, safety and better handling.

\*Compared to standard 2-ply tyres.



**Higher Tensile  
Construction**



A Higher Tensile Construction gives you maximum strength and more protection with a higher load capacity.

- High Tensile Cords give you 33% more strength than standard tensile cords.
- Super Tensile Steel Belts give you 15% more strength than high tensile steel belts.





See the value in

## SUV CONSTRUCTION AND ENGINEERING



### Construction Fit For Purpose

Cooper Tires® SUV and car tyres are built strong like 4WD tyres, but there are a few differences. The technology is focused on creating a quiet, soft ride with exceptional stopping power and strength for high ride vehicles. The construction comprises of SUV Light Duty Steel Belts for a softer, quieter ride, Reinforced Body Ply for reduced sidewall damage and increased silica for more grip.



### R-Tech Engineering

R-Tech Engineering gives you improved handling and a smoother ride. This technology can be broken down into two main features:



**Extended bead filler** reinforces the area of the tyre that can weaken over time with constant stopping and turning in everyday driving, leading to reduced performance and handling. The extended bead filler improves lane changing ability, cornering and overall steering response.



**Variable density nylon\*** overlays the steel belts to offset any stiffness created by the extended bead filler, meaning you get a safer, softer and smoother drive.

\*Configuration may vary depending on tyre size.

# NOT ALL TYRES ARE THE SAME, COMPARE THE VALUE

## SAVE MONEY AND GO FURTHER WITH COOPER'S HIGHER UTQG RATINGS

Looking for adventure? Add Cooper® to your vehicle. With the latest technology you will notice a difference to strength, stability, performance and value for money. Cooper® tyres last longer and go further because of one big difference, Cooper's high UTQG Ratings.

You may have noticed markings on the sidewall of your tyres, those are UTQG 'Uniform Tire Quality Grading' ratings for Treadwear, Traction and Temperature. The higher the rating, the better the tyre is rated to perform.

It gives drivers an easy way to compare the tyres - based on universal ratings.





## Treadwear

Treadwear grades are an indication of a tyre's wear rate. The higher the treadwear number, **the longer it takes for the tread to wear down.**

A 'standard' control tyre is assigned a grade of 100 and the treadwear rates of all test tyres are compared to it. For example, a tyre grade of 200 should take twice as long as the control tyre to wear out.

## Traction

Traction grades are an indication of a tyre's ability to stop in the wet. A higher grade should allow your vehicle to **stop on wet roads in a shorter distance** than a tyre with a lower grade.

Traction is graded from highest to lowest as AA, A, B and C.



**Cooper's stop quicker in emergencies  
by up to 26%\***

\*Braking distance measured between Cooper's CS5, with chemically-coupled silica, against other tyre brands at 100kph in wet conditions.

## Temperature

Temperature grades are an indication of a **tyre's resistance to heat.** The higher the grade, the more resistant the tyre would be to the generation of heat at speed. Sustained high temperatures (for example, driving long distances in hot weather), can cause a tyre to deteriorate, leading to tyre failure. A tyre's resistance to heat is graded from highest to lowest as A, B or C.

To find out how to check the value of your tyres visit **[coopertires/UTQGrating](https://www.coopertires.com.au/UTQGrating).**



**TYRES WORTH OWNING**

Your nearest Authorised Cooper Tires® Retailer is: